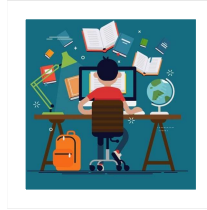


## Virtual and On-site 1:1 or Small Group Tuition



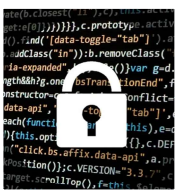
**Bespoke tutoring services from GSL Education offer 26 years of experience** in blended approaches, designed to best support individual learners. **EEF research** shows that quality teaching, incorporating peer interactions, leads to improved motivation and outcomes; therefore our platform can be accessed for **1:1 and small group tuition**.

The recent Corona Virus pandemic has had a profound impact on the educational, emotional and social well-being of young people. **Like schools, we are committed to helping to restore the balance, and 'level-up' their learning confidences.**



### Ethical

Our mission is to support schools; therefore, we have created *flexible packages to help make the funding go further*. Our partnerships will ensure learning is *uniquely tailored* - with *onsite face-to-face delivery* available. Our service will also promote *holistic well-being*.



### Secure

Our secure, fully licensed, platform and code of practice *exceeds legal, GDPR and school safeguarding requirements*. *Secure user logins and passwords* are created without the need for personal data collection. *Tutors are fully vetted* to DFE Safeguarding Standards as per our *REC Education Accreditation*



### Accountable

Our tutors are *Qualified Primary, Secondary and SEN Teachers with subject specialism; EAL Professionals; Learning Support Assistants and Mentors*. On hand to not just deliver curriculum, but to *build a foundation for learning confidence; scaffolding literacy and numeracy skills*. *Online lessons can be overseen and monitored by designated school staff*.



### Measurable

*Clear, simple, data - driven tracking* will be provided in partnership with key staff in order to *effectively demonstrate the impact* of tutoring input - towards the desired outcomes, and show progress over time. This can be *fully tailored* to the systems and procedures used in your school.



### Flexible

Our portal is *user-friendly* allowing tutors to upload 'read-only' resources; set homework and utilise the whiteboard facility. *Hourly scheduled bookings* allow for *fully flexible packages and trialing capabilities*. We can even offer *face-to-face sessions* and *complement existing facilities* in school or at home.

**Call us now to make the best use of your catch-up funding!**

**GSL Education 'Taking Learning Forward'**

Email [sarah.andrews@gsleducation.com](mailto:sarah.andrews@gsleducation.com) or contact me on **01227 936880**